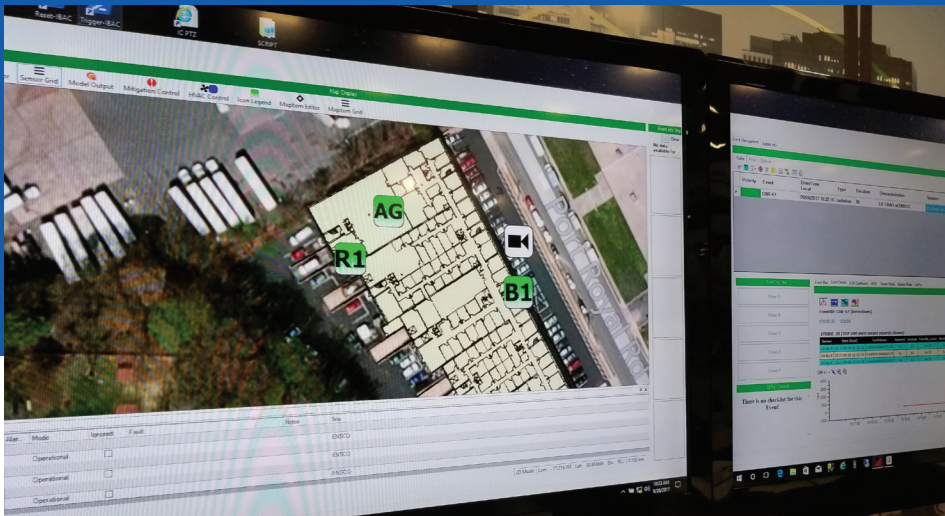


SenseGuard™

Integrated, Early Warning Protection and Detection System for CBRN, CWMD, and other types of alarm and security data



Consolidate and integrate your CBRN/CWMD and other alarm data to protect people, property and missions.

Whether a threat is real or perceived, seconds count. Rapid interpretation of data is key—and it won't happen if sensors and systems are disconnected and operating independently.

SenseGuard™ provides unparalleled situational awareness across all threat environments by consolidating CBRN/CWMD and alarm data in one system that is visible and accessible from any location, including mobile devices. The open, cloud-based architecture allows for the integration, fusion and real-time prescriptive analysis of data from any type or number of sensors and alarms—including chemical and bio-threat platforms and existing physical security systems—enabling decision makers to quickly interpret large amounts of disparate sensor information.

This comprehensive approach to enterprise, building and campus-wide security ensures that when threats appear, decision makers have all the information they need to take the appropriate action and keep people, property and critical-mission activity safe. The SenseGuard™ system ensures that citizens, staff and their important work activities receive the highest level of threat protection.

Cloud-based or intranet platform built on proven and CBRN/security systems technology and available for any infrastructure or industry type.

Based on the existing SENTRY systems, currently in operation in major facilities for almost 20 years, SenseGuard™ is a state-of-the-art system that can operate effectively in any industry, government, or commercial infrastructure environment, including:

- Transportation
- Medical
- Military
- Government
- Individual buildings or large facility campuses
- Critical or sensitive infrastructure

The SenseGuard™ Advantage







SenseGuard™ delivers cross-cutting and economically scalable CBRN technology components that leverage autonomous, man-machine teaming, machine-machine teaming, and swarming methods to investigate and interrogate a potentially hazardous situation.

Key features include:

- Automated sense, analyze and respond technology
- Autonomous platforms
- Sensor-communication integration, information analysis and decision support tools for CBRN sensors
- Integrated platforms capable of machine-machine cooperative actions
- Machine learning hardware/software solutions

SenseGuard™ is adaptable to all customer needs:

- Supports “kitted” applications, including wireless and highly portable environments for quick deployment
- Works with mobile applications, including wireless platform-based sensor systems
- Operates on both military and civilian platforms
- Flexible and configurable to conform to site concept of operations evolution
- Robust, automated command and control features with manual override
- Resides within and conforms to site's IT network infrastructure
- Adheres to all information assurance guidelines
- Adaptable to all local IT policies, limitations and environmental factors

Features	Benefits
<p>Sensor- and Platform-agnostic System Design</p>  <ul style="list-style-type: none"> • SenseGuard™ supports any type or number of sensors, alarms systems, and security platforms • Integrated and comprehensive view of all sensors, alarms and security systems/platforms • Intranet or cloud-based architecture 	<p>Instantaneous Threat Interpretation</p>  <ul style="list-style-type: none"> • Ensures citizens, staff, property, and missions are protected through comprehensive and immediate threat detection • Quick decision making through one consolidated system • 24/7 real-time monitoring of operations from one integrated system, available from any location
<p>Multi-sensor Automated Detection</p>  <ul style="list-style-type: none"> • Complete integration and consolidation of any sensor type, including CBRN sensors, building management systems (BMS), security systems, fire safety systems, and HVAC systems • Total system control from any location • View of complete geospatial environment 	<p>Full Situational Awareness</p>  <ul style="list-style-type: none"> • Quick decision making through one consolidated system • Drill-down ability supports full situational awareness • System provides full threat/event location awareness
<p>Automated Sense, Analyze and Respond Technology</p>  <ul style="list-style-type: none"> • System defines threat or event location • Prompts operators with appropriate response actions, depending on the type and potential impact of threat • Autonomous, man-machine/machine-machine teaming and swarming methods to investigate and interrogate threats 	<p>Adaptable, Scalable and Cost-effective System</p>  <ul style="list-style-type: none"> • Intranet or cloud-based architecture can easily be configured to meet your specific security needs • Reduce security-manning requirements by consolidating all sensor and alarm data into one system • System is scalable to operational needs • Reduces the cost of installing and maintaining multiple threat detection systems

Call us today to learn how **SenseGuard™** provides instant and total situational awareness across all threat environments.



1-800-ENSCO-VA
 info@ensco.com
 www.ensco.com