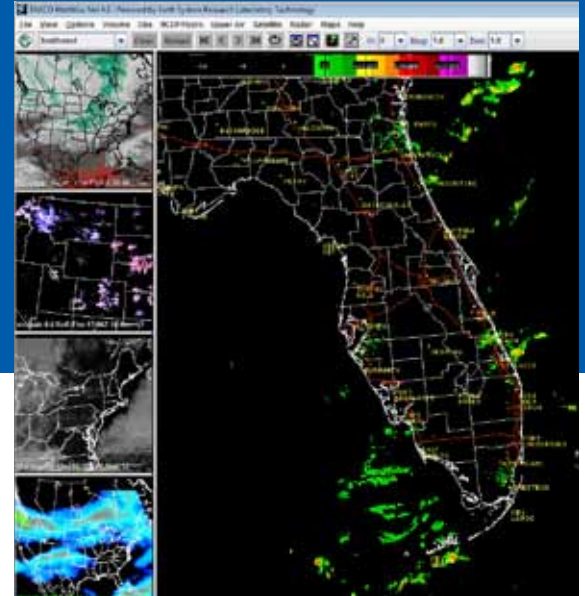




MetWise® Net



Harnessing the power of the Internet by finding, filtering and customizing weather data

The Internet is an important resource for weather information. But while a standard Web browser can provide access to a wealth of satellite imagery, forecast models, radar and observations, the data is scattered across the Internet. Sifting through and assimilating the data to find information that meets specific needs can be a daunting and time-consuming task.

ENSCO's MetWise® Net allows graphical users to not only access available weather information and data via an Internet connection, but also to store, manipulate and customize it in a single location: a personal computer. MetWise Net enables users to create custom weather graphics on the fly—in a way that fits their needs.

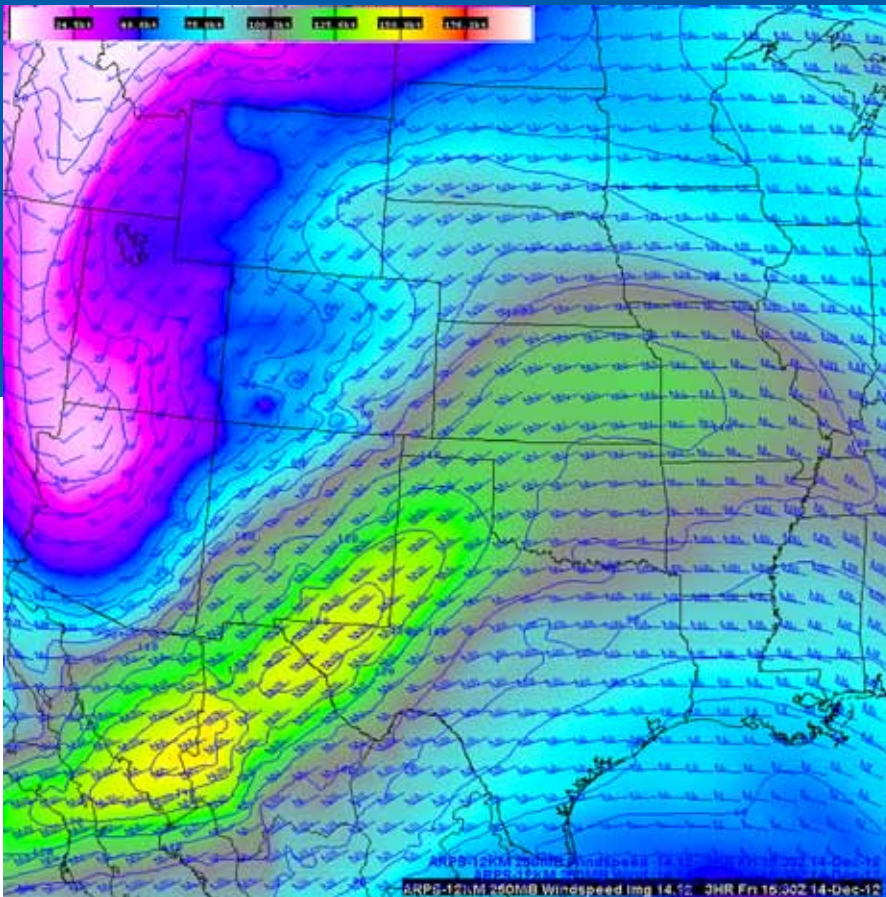
Simple, easy-to-use user interface

MetWise Net's user interface is powerful, yet easy to use. The MetWise Net client can load and overlay the meteorological products that specifically meet user needs and interact with the information obtained from the Internet. With MetWise Net, users can display and rapidly switch among five product windows.

The interface uses standard pull-down menus, a primary graphics window, and four product storage windows. Once a product is loaded, it can be moved to a storage window and retrieved later with a single mouse click. With minimal effort, users can adjust the system to display customized scales, add supplementary observational data and display special customer-oriented forecast models in combination with the existing suites of National Weather Service products.



MetWise® Net allows users to not only access available weather information and data via an Internet connection, but also to store, manipulate and customize it in a single stand-alone location: a personal computer.



MetWise® Net Features

- High-resolution GOES satellite imagery
- All NEXRAD radar sites in the continental U.S. and Puerto Rico
- Domestic and international weather prediction models
- ENSCO mesoscale weather prediction model graphics
- Aviation products
- Animation
- Hurricane tracks
- Severe storm watches
- Lightning strikes
- Worldwide cities in “Maps” menu
- Domestic roads in addition to interstate highways
- Adding and toggling overlays
- Primary product window “Auto Reload”
- Image fader tool allows user to fade a single image to transparent
- Magnification capability allows increasing text size
- Sampling of image products, including model images
- Hide/Show all frames
- Unload product features by right clicking on legend
- Limited load modes
- Change color of default map background
- Dashed lines available as a line style
- Macros
- Zoom
- Swap display windows
- Save images in GIF or JPG format
- Printing on white background saves ink

A powerful, flexible system

The flexibility of MetWise Net makes it a very functional weather display system for professional meteorologists, researchers, teachers, storm chasers, and any weather enthusiast. MetWise Net is a request-based, client-server system that operates as an extension of ENSCO’s MetWise multi-workstation weather display and analysis system. The ENSCO MetWise server is primarily responsible for time-matching products, and for creating and delivering product files. The MetWise Net client runs as a Java application on a Windows®, Mac® or Linux® operating system. After retrieving user-requested products from the MetWise server via an Internet connection, users can locally interact with the information. Connections to the server are only maintained during the request and retrieval of products.

Key products included in MetWise Net

- High-resolution satellite imagery
- All NEXRAD radar sites in the continental U.S. and Puerto Rico
- Domestic and international weather prediction models
- Hurricane tracks
- Severe weather watches
- ENSCO mesoscale weather prediction model graphics
- Pilot reports of wind, turbulence and icing

Requirements

- PC: 500 MHz, 512 MB RAM, Windows® XP, Windows Vista, Windows 7
- Mac®: Intel, G4 or G5 processor, 512 MB RAM, Mac OS X
- Linux®: 500 MHz, 512 MB RAM



800-ENSCO-VA
 metwise@ensco.com
 www.ensco.com/metwise