

Track/IT®



Simplify enterprise-wide storage, analysis and dissemination of track infrastructure, maintenance and inspection data

Track/IT® is a comprehensive, enterprise web-based system for track asset management. Produced by ENSCO, Inc., it includes a suite of viewing and analytical tools for easy review and analysis of track infrastructure, maintenance and inspection data. Track/IT provides a means to assemble information from a variety of data sources, for easy reading and formats it into a central management system that simplifies the storage, analysis and dissemination of critical information.

Maximum flexibility

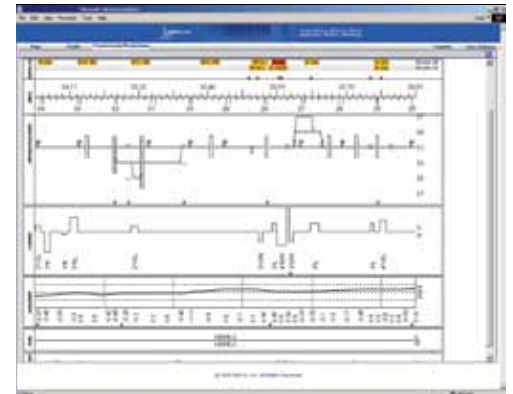
Track/IT is offered two ways to meet the information technology needs of customers: as a hosted web service, or a site license installed on a corporate network. The technology is compatible with a variety of data communication protocols to facilitate automated data loading and integration with existing information management systems. End users access the website through a secure login to gain access to a variety of viewing and analytical tools that provide information in a selection of graphic formats including map, tabular and track chart. The product also provides a means to download data to standard Microsoft Excel® file formats providing users the flexibility to perform custom data analysis.

Track chart management

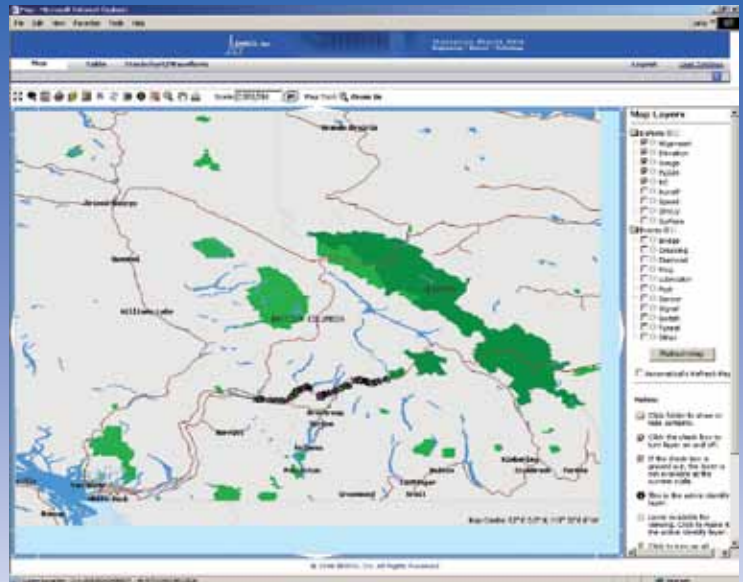
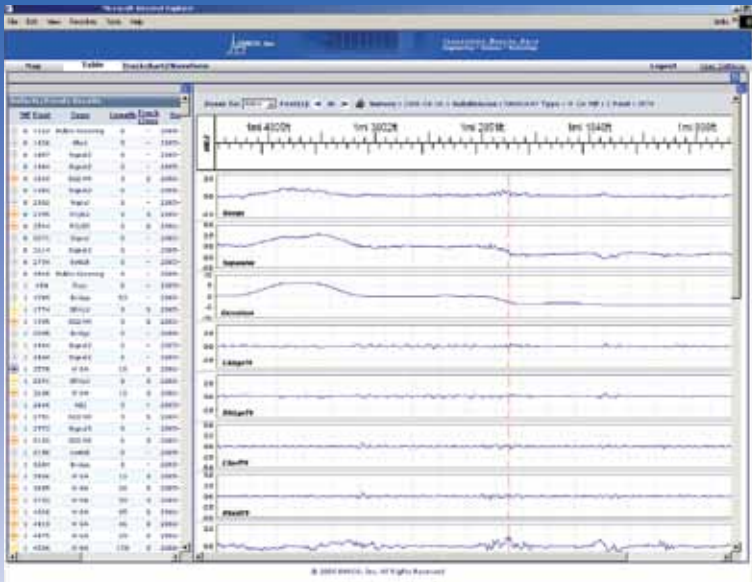
Track/IT is a flexible tool that can be used for track chart management. It is capable of immediately generating production quality track charts for a subdivision or an entire railroad. The application allows users to customize the track chart content and export it to a PDF track chart book. Track charts are generated at the time of request to ensure up-to-date content.

Derailment investigations

In the event of a derailment, Track/IT users can generate a report of current track data in less than 10 minutes for the derailment site. Data available for reporting can include track charts, geometry and rail wear test results, video images and ultra-sonic rail flaw to name a few.



Sample Track Chart Manager application screen.



Sample Brush Chart Manager application screen.

Sample Map Manager application screen.

Maintenance planning

Track/IT offers consolidated track chart views that combine displays of track maintenance and inspection results over time, allowing planning departments to assess both the degradation of track and the effectiveness of program maintenance. This information is valuable to the maintenance planning process. In addition, Track/IT can be used to download the latest track charts, inspection results, strip charts and GPS waypoint files prior to a trip to the field for on the ground verification.

Ease of use

Track/IT is an intuitive, web-based tool that makes it easy for information to be transmitted to authorized users while maintaining secure data storage. It is also a flexible tool that can be scaled to meet the needs of an organization. A variety of data loading engines are in place to facilitate the centralization of common industry data types from a variety of suppliers. Reports and graphical outputs are configurable. End user training can be accomplished in less than two hours.

ENSCO's suite of products

Track/IT complements the use of other ENSCO products including the V/TI Monitor, Autonomous Track Geometry Measurement System and DigitalTrack® Notebook. Each of these products is designed to interface directly with Track/IT to enhance the reporting capabilities to the end users.

Key features

Use Track/IT to manage the measurement of:

- Track geometry
- Rail wear
- Rail corrugation
- Overhead wire
- Third rail
- Autonomous V/TI and track geometry

As well as:

- Track charts
- Right of way video recording
- Track bed video recording
- Ultrasonic track inspection



800-ENSCO-VA
info@ensco.com
www.ensco.com